

REPORT
ON
STUDENT SATISFACTION SURVEY
(2022-2023)



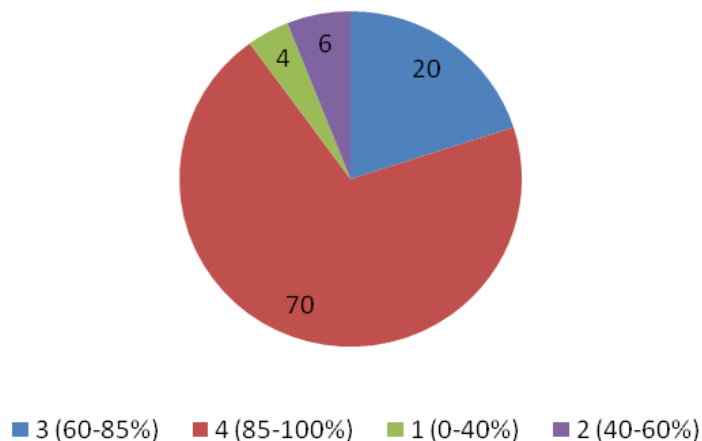
Internal Quality Assurance Cell (IQAC)
Sree Chaitanya College, Habra

STUDENT SATISFACTION SURVEY (2022-2023)

The Sree Chaitanya College, Habra provides an exceptional learning environment aimed at maximizing student potential and fostering high academic performance. The Internal Quality Assurance Cell (IQAC) systematically gathers student feedback to assess the effectiveness of the teaching-learning process and implements necessary adjustments. During the 2022-23 academic session, feedback was solicited from 340 students across various disciplines, focusing on aspects such as teaching quality, mentoring, facilities, and infrastructure. The results of the feedback analysis are outlined herein:

❖ Responses about extent of syllabi covered in the class:

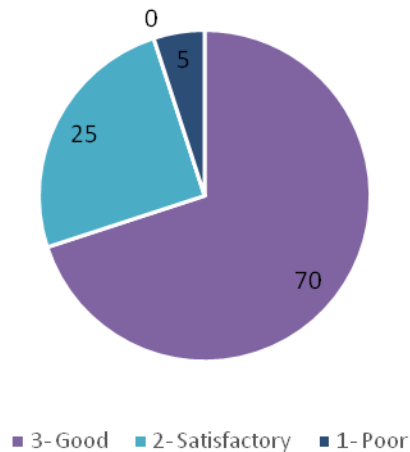
Extent of syllabi covered in the class



Many of the respondents (70%) shared that 85-100% of the syllabus was covered in class. It was also observed that 20 percent of the respondents shared that 60-85% of the syllabus was covered in class.

❖ **Responses about quality of lectures:**

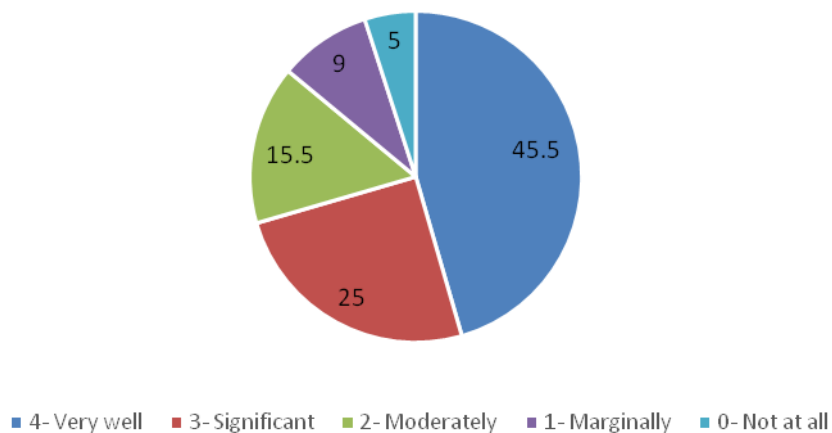
Quality of lectures



Maximum number (70%) of respondents shared that the quality of lectures was good and the remaining percentage of respondents indicated satisfactory lectures.

❖ **Responses on mentoring of students:**

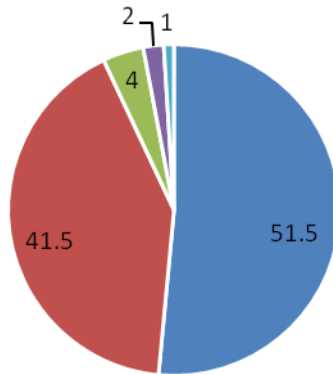
Responses on mentoring of students



Out of the total 340 respondents, many shared that the teaching and mentoring process in the institution very well (45.6%) facilitates cognitive, social, and emotional growth; 25 percent shared that teaching and mentoring process in the institution significantly facilitated cognitive, social, and emotional growth while 15.5 % shared moderate teaching and mentoring process in the institution.

❖ **Responses on application based teaching:**

Responses on mentoring of students

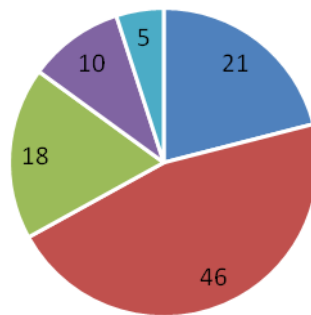


■ 4- Every time ■ 3- Usually ■ 2- Occasionally/Sometimes ■ 1- Rarely ■ 0- Never

Half of the respondents (51.5 %) shared that the teachers illustrate the concepts through examples and applications every time, 41.5 % shared it was done usually and 4 % shared it was done occasionally or sometimes.

❖ **Teachers can identify the weakness of the student and help them overcome them:**

Teachers can identify the weakness of the student and help them overcome them

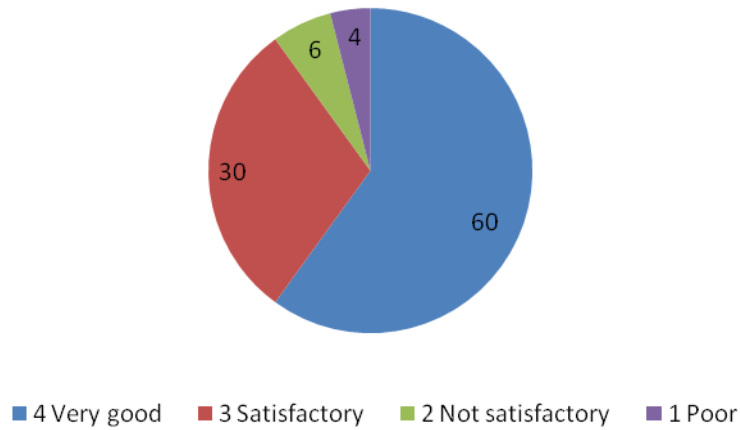


■ 4- Every time ■ 3- Usually ■ 2- Occasionally/Sometimes ■ 1- Rarely ■ 0- Never

Nearly half of the respondents (46 %) shared that the teachers can usually identify the weakness of the student and help them overcome the weakness, 21 % shared that teachers can every time identify the weakness of the student and help them overcome the weakness, while 18 % shared that teacher can identify the weakness of the student and help students overcome the weakness occasionally or sometimes.

❖ **Responses about library facilities:**

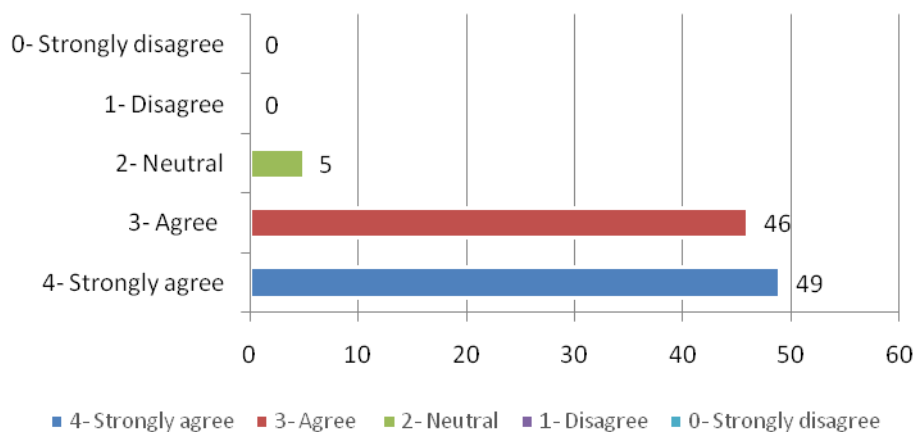
Responses about library facilities



More than half number (70%) of respondents shared that the Institute provided very good library facilities while 30 % of respondents indicated satisfactory library facility.

❖ **The overall quality of the teaching-learning process in the Institute is very good:**

The overall quality of the teaching-learning process in the Institute is very good



An equal number of respondents each strongly agreed (49%) or agreed (46%) that the overall quality of the teaching-learning process in the Institute is very good.